

STABILUS POWERISE®

Installation Instruction



Part Number: 646549

BMW X4

Generation: 2014
Left and Right

Note:
Only to be replaced in pairs!

OE-Numbers:

51247339431
51247339432

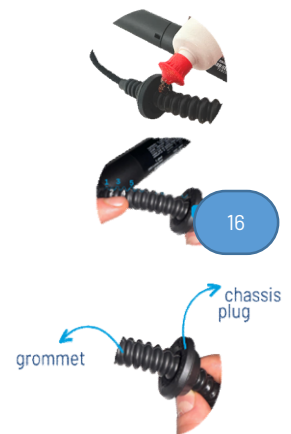
Stabilus GmbH

Wallersheimer Weg 100
56070 Koblenz
Germany
T +49 261 - 8900-0
info@stabilus.com
www.stabilus.com

Note: Only authorized personnel should perform the installation. Drives must be replaced in pairs. The appearance of the Stabilus drive may differ from the original but does not affect functionality. Always refer to the manufacturer's guidelines for specific instructions and safety precautions.

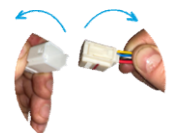
Step 1: Prepare the grommet

- Apply a drop of dish soap to facilitate plug movement
- Slide the chassis plug onto the 16th rib. Note: Do not count the first two ribs next to the drive
- Adjust the grommet's length by holding the grommet, not the drive



Step 2: Dismantle the car's panel

- Remove the panel to access the connector
- Disconnect the connector from the vehicle, noting the connectors' appearance may differ



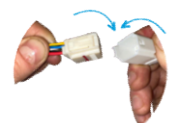
Step 3: Remove the drives

- Support the tailgate/trunk lid while removing the drives one at a time
- Release the clip at the end fittings



Step 4: Install Stabilus Replacement Drives

- Remove the extension cable for the lefthand drive, before you install the Stabilus replacement drives
- Link the cables from the Stabilus drive to the counterpart connector
- Make sure you put the left hand drive on the left side and the right hand one on the right side



STABILUS POWERISE®

Installation Instruction



Part Number: 646549

BMW X4

Generation: 2014
Left and Right

Note:
Only to be replaced in pairs!

OE-Numbers:

51247339431
51247339432

Stabilus GmbH
Wallersheimer Weg 100
56070 Koblenz
Germany
T +49 261 - 8900-0
info@stabilus.com
www.stabilus.com

Note: Only authorized personnel should perform the installation. Drives must be replaced in pairs. The appearance of the Stabilus drive may differ from the original but does not affect functionality. Always refer to the manufacturer's guidelines for specific instructions and safety precautions.

Step 5: Insert the Grommet

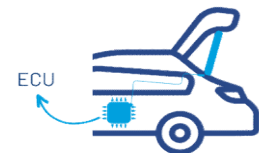
- Ensure proper insertion of the grommet into the vehicle
- Use a drop of dish soap to ease installation
- Confirm the grommet length is correct
- Prevent contact of the grommet to the bodywork (except for cable routing) or placing the grommet under tension during this process
- If necessary, readjust



Step 6: Set up control unit

After reassembling the panel:

- Press the closing button on the tailgate
- Drive performs a learning run by itself



Caution: Be mindful of the Push-To-Run function in some electric tailgate systems; moving the

Step 7: Set Desired Hatch Position

- Adjust the maximum opening angle in the control panel
- If you realize a hard end-stop of the tailgate choose the next lower option

