

# STABILUS POWERISE®

## Installation Instruction



**Part Number: 943852**

### Ford Mondeo

Generation: 2014  
Left

### OE-Numbers:

1871842  
1885786  
2020009  
2441973

### Stabilus GmbH

Wallerseimer Weg 100  
56070 Koblenz  
Germany  
T +49 261 - 8900-0  
info@stabilus.com  
[www.stabilus.com](http://www.stabilus.com)

*Note: Only authorized personnel should perform the installation. Always refer to the manufacturer's guidelines for specific instructions and safety precautions.*

### Step 1: Prepare the grommet

- Apply a drop of dish soap to facilitate plug movement



### Step 2: Dismantle the car's panel

- Remove the panel to access the connector
- Disconnect the connector from the vehicle, noting the connectors' appearance may differ



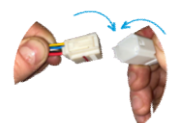
### Step 3: Remove the drives

- Support the tailgate/trunk lid while removing the drives one at a time
- Release the clip at the end fittings



### Step 4: Install Stabilus Replacement Drives

- Install the Stabilus replacement drives
- Link the cables from the Stabilus drive to the counterpart connector
- Make sure you put the left hand drive on the left side and the right hand one on the right side



# STABILUS POWERISE® Installation Instruction



**Part Number: 943852**

*Note: Only authorized personnel should perform the installation. Always refer to the manufacturer's guidelines for specific instructions and safety precautions.*

## Ford Mondeo

Generation: 2014  
Left

## OE-Numbers:

1871842  
1885786  
2020009  
2441973

## Stabilus GmbH

Wallersheimer Weg 100  
56070 Koblenz  
Germany  
T +49 261 - 8900-0  
info@stabilus.com  
[www.stabilus.com](http://www.stabilus.com)

### Step 5: Insert the Grommet

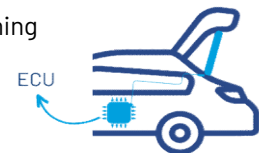
- Ensure proper insertion of the grommet into the vehicle
- Use a drop of dish soap to ease installation
- Confirm the grommet length is correct
- Prevent contact of the grommet to the bodywork (except for cable routing) or placing the grommet under tension during this process
- If necessary, readjust



### Step 6: Set up control unit

After reassembling the panel:

- Close tailgate manually, until lock is engaged
- Open and close the hatch automatically (learning run)



**Caution:** Be mindful of the Push-To-Run function in some electric tailgate systems; moving the tailgate too quickly during setup can cause complications.

### Step 7: Set Desired Hatch Position

- Manually open the hatch to the desired position
- Program the drive accordingly by pressing and holding the closing button on the hatch until a signal is received.
- Make sure the tailgate only opens to the programmed position now, by closing and opening the tailgate automatically again

